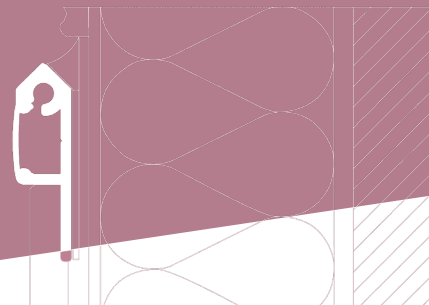


C LED plinth trim offers neat finishing of wall-floor joints on terraces, patios and balconies surfaced with porcelain tiles laid with a tile adhesive or with pebblestone flooring.



## KEY FEATURES

- shaped for tightness and aesthetics
- coated for long-term durability and full corrosion resistance
- LED light strip may be fitted to illuminate the floor

## TECHNICAL DATA

<b>BODY</b>	made of AW 6060 aluminium alloy
<b>WEIGHT</b>	approx. 245 g/m (linear meter)
<b>COATING SYSTEM</b>	0.6 - 1.2 g/m <sup>2</sup> conversion coating, and min. 60 µm polyester powder coating

## INSTALLATION TOOLS

You will need the following tools: folding ruler, spirit level, knife, electric drill, hand-held mixer, steel plastering trowel, string line, pencil, spatula, metal handsaw or circular saw. Circular saw should be equipped with an aluminium cutting blade to cut without damaging the coating.

## AUXILIARY COMPONENTS



5 MM DIA STAINLESS  
STEEL SLIDE-IN  
CONNECTOR



C LED R+L  
END CAPS



LED DIFFUSER  
COVER

## BASE

The base should be sound, level and clean to allow mechanical fixing.

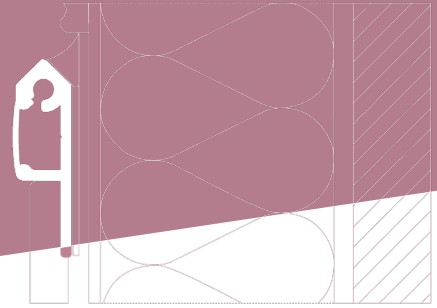
## AMBIENT CONDITIONS DURING INSTALLATION

Ambient conditions should be as typically required for waterproofing and installation work.

## COLOURS

Standard colours: RAL 7037 dusty grey, RAL 7024 graphite grey, RAL 8019 grey brown. Other colours from RAL Classic chart are available on request.

C LED plinth trim offers neat finishing of wall-floor joints on terraces, patios and balconies surfaced with porcelain tiles laid with a tile adhesive or with pebblestone flooring.



## INSTALLATION

The trims are fixed mechanically using anchors appropriate for the substrate. Follow the installation guide available at: <https://www.renoplast.pl/download>.

SEE PRODUCT →



## INSTALLATION GUIDELINES

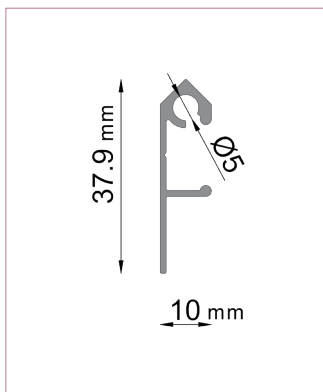
Protect the paint coat from damage during installation. Reject any damaged components. Any dirt should be removed from the surfaces using water and non-abrasive cloth. Wet materials, such as sealing slurry or tile adhesive should be removed from the outer surfaces before drying. The manufacturer shall not be liable for any damage resulting from product misuse or using inadequate auxiliary materials or tools. All work must be in compliance with construction plans, product data sheet, relevant standards, good construction practice and safety requirements.

## MAINTENANCE GUIDELINES

During use clean the trims at least twice a year. For cleaning use clean water and non-abrasive cloth. Do not use highly acidic or highly alkaline cleaners or surfactants which may react with aluminium. Do not use organic solvents containing esters, ketones, aromatic compounds, glycol esters, chlorinated hydrocarbons, etc. After cleaning rinse the surfaces with cold clean water. Do not use salt or other de-icing chemicals near the trims. We recommend to check the condition of the relevant terrace, patio and balcony components every six months. Immediately remove any discovered defects.

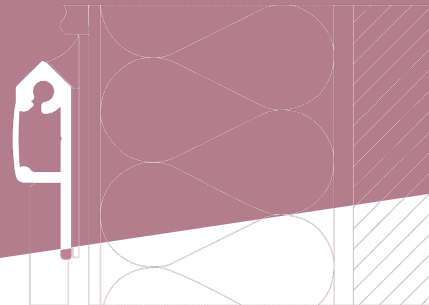
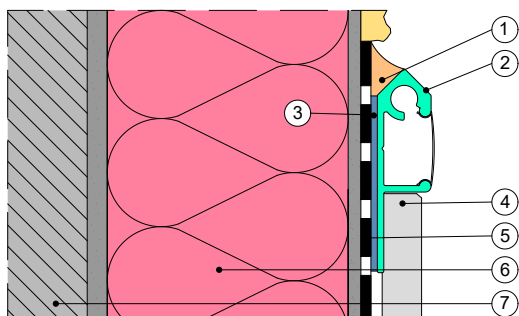
## DIMENSIONS

### CROSS-SECTIONS:



C LED PLINTH TRIM

C LED plinth trim offers neat finishing of wall-floor joints on terraces, patios and balconies surfaced with porcelain tiles laid with a tile adhesive or with pebblestone flooring.

**INSTALLATION EXAMPLE**

1. Sealant
2. **C LED plinth trim**
3. Construction adhesive
4. Porcelain paver
5. Sealing slurry
6. Insulation
7. Structural wall

**Notes:**

Edition: 7.05.2026. This product brochure supersedes all previous editions. It gives recommendations for standard application conditions only, and thus shall not be used in place of installation drawings. Suitability of our products for particular conditions should be verified by the contractor. The actual product specifications may vary slightly due to allowable process or tool dimension changes. Any materials used in combination with Renoplast products must be obtained from reputable sources. Our liability for any omissions or inaccuracies of the data given in this brochure is limited to gross disinformation and/or negligence.

