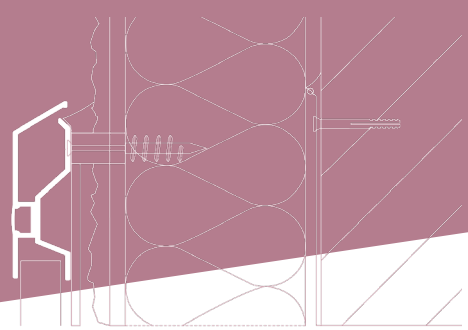


The C2/C2 plinth trim system consisting of C1 base rail and C2 trim offers neat trimming of wall-floor joints on balconies, patios and terraces with pedestal flooring.



KEY FEATURES

- watertight and durable wall-floor joint trimming system, featuring optional LED light strip
- neat finishing of wall-floor joint
- complete system, quick installation

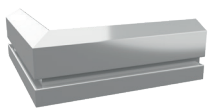
TECHNICAL DATA

BODY	made of AW 6060 aluminium alloy
WEIGHT	approx. C1 - 340 g/m (linear meter), approx. C2 - 480 g/m (linear meter)
COATING SYSTEM	Coating system is applied on the C2 trim only. 0.6 - 1.2 g/m ² conversion coating, and min. 60 µm polyester powder coating

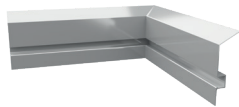
INSTALLATION TOOLS

You will need the following tools: folding ruler, spirit level, electric drill, electric driver, string line, pencil, cartridge gun, metal handsaw or circular saw. Circular saw should be equipped with an aluminium cutting blade to cut without damaging the coating.

AUXILIARY COMPONENTS



C2 90 MAXI PLINTH
EXTERNAL CORNER



C2 90 MAXI PLINTH
INTERNAL CORNER



LC2 TRIM
CLIP



OPC2 R+L
STOPENDS



SWD 6 CM BOTTOM
RESTRAINT BRACKET



SWD 6 CM CONCEALED
BOTTOM RESTRAINT
BRACKET



LED DIFFUSER
COVER



SELF-DRILLING SCREW FOR
FIXING R50/ RK65 GUTTERS
AND C2 PLINTH TRIM

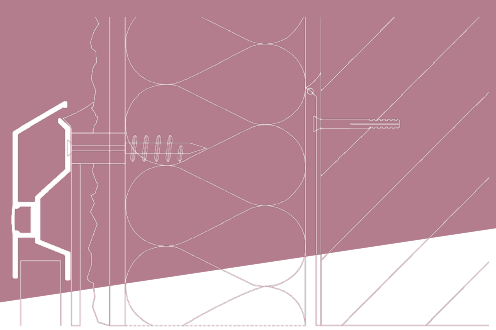
BASE

The base must be strong enough for mechanical fixing of the system components with appropriate anchors.

AMBIENT CONDITIONS DURING INSTALLATION

Ambient conditions should be as typically required for waterproofing and installation work.

The C2/C2 plinth trim system consisting of C1 base rail and C2 trim offers neat trimming of wall-floor joints on balconies, patios and terraces with pedestal flooring.



COLOURS

Standard colours: RAL 7037 dusty grey, RAL 7024 graphite grey, RAL 8019 grey brown. Other colours from RAL Classic chart are available on request.

INSTALLATION

C1 rail is fixed to base using appropriate anchors. Follow the installation guide available at: <https://www.renoplast.pl/download>.

SEE PRODUCT →



INSTALLATION GUIDELINES

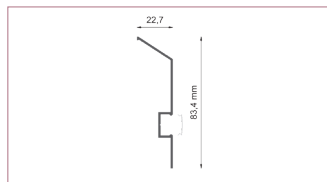
Protect the paint coat from damage during installation. Reject any damaged components. Any dirt should be removed from the surfaces using water and non-abrasive cloth. Wet materials, such as sealing slurry or tile adhesive should be removed from the outer surfaces before drying. The manufacturer shall not be liable for any damage resulting from product misuse or using inadequate auxiliary materials or tools. All work must be in compliance with construction plans, product data sheet, relevant standards, good construction practice and safety requirements.

MAINTENANCE GUIDELINES

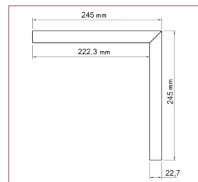
For cleaning use clean water with some detergent. Do not use highly acidic or high alkaline cleaners or surfactants, which may react with aluminium. Do not use organic solvents containing esters, ketones, aromatic compounds, glycol esters, chlorinated hydrocarbons, etc. After cleaning rinse the surfaces with cold clean water. In winter do not use salt or other de-icing chemicals. We recommend to check the condition of the relevant terrace, patio and balcony components every six months. Immediately remove any discovered defects.

DIMENSIONS

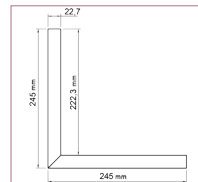
CROSS-SECTIONS:



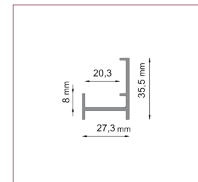
C2 PLINTH TRIM



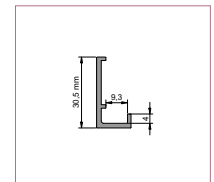
C2 90 MAXI PLINTH
EXTERNAL CORNER



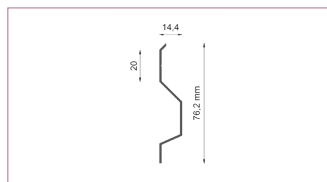
C2 90 MAXI PLINTH
INTERNAL CORNER



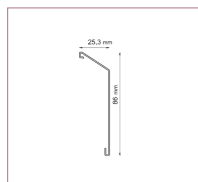
SWD 6 CM BOTTOM
RESTRAINT BRACKET



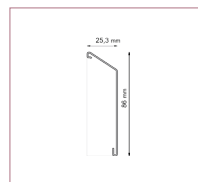
SWD 6 CM CONCEALED
BOTTOM RESTRAINT
BRACKET



C1 PLINTH TRIM BASE RAIL

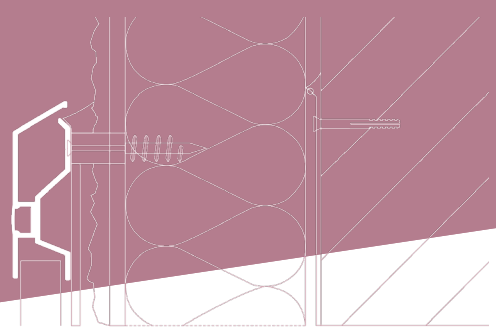
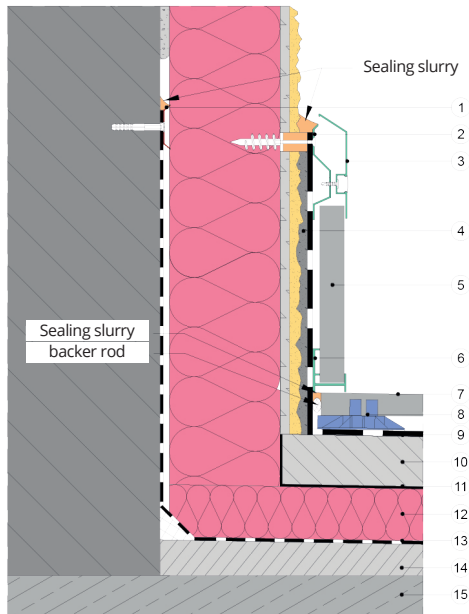


LC2 TRIM CLIP

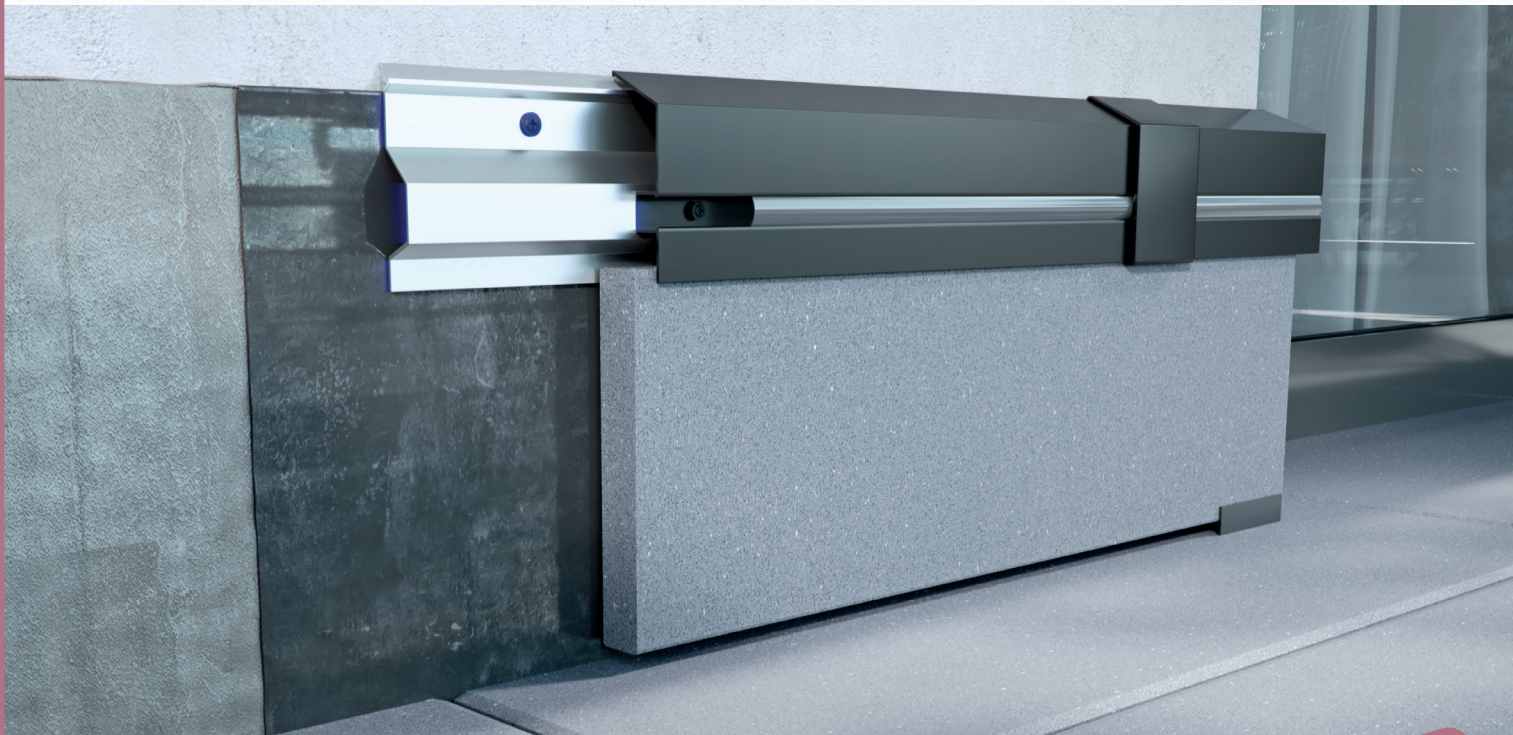


OPC2 R+L STOPENDS

The C2/C2 plinth trim system consisting of C1 base rail and C2 trim offers neat trimming of wall-floor joints on balconies, patios and terraces with pedestal flooring.

**INSTALLATION EXAMPLE**

1. LD37 termination bar
2. C1 plinth trim base rail
3. C2 plinth trim
4. Smoothing coat
5. Porcelain panel plinth
6. SWD 6 cm bottom restraint bracket
7. Porcelain pavers
8. SMART pedestal
9. EPDM membrane
10. Loading layer
11. Separating layer
12. Insulation
13. Vapor barrier
14. Sloping layer
15. Structural slab

**Notes:**

Edition: 7.05.2026. This product brochure supersedes all previous editions. It gives recommendations for standard application conditions only, and thus shall not be used in place of installation drawings. Suitability of our products for particular conditions should be verified by the contractor. The actual product specifications may vary slightly due to allowable process or tool dimension changes. Any materials used in combination with Renoplast products must be obtained from reputable sources. Our liability for any omissions or inaccuracies of the data given in this brochure is limited to gross disinformation and/or negligence.

Renoplast

RENOPLAST Sp. z o.o.
 phone: +48 697 635 580
 office@renoplast.pl
 www.renoplast.pl/en

